

Linkage to Care

ExAM Program Leading Jail-Based MAT Access

Provides community-based MAT and follow-up for individuals after release from jail

Data show clear improvement across program activities over years. Engagement increased from 383 individuals in Year 1 to 428 in Year 2, demonstrating expanded outreach efforts. Referrals rose 158 to 223, and the same increase was seen in linkage to care, indicating stronger follow-through in connecting individuals to community based MAT/MOUD treatment services

100%
N=428

Engaged with ExAM program coordinators

100%
N=223

Referred to Treatment upon release

100%
N=223

Linked to community-based Treatment

Mat/MOUD Treatment Services

| | | |
|----------|------------------------------------|-----------------------------------|
| Referred | 158 | 223 |
| Linked | 158 | 223 |
| | Year 1 (January - August, 2024) | Year 2 (Sept, 2024- Aug, 2025) |

KEY DEMOGRAPHICS OF ENGAGED Inmates (N=428)

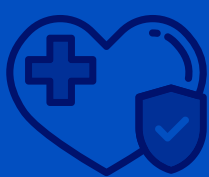
- Average Age: 38 yr
- Race: 65% White, 29% Black, 1% Multiracial
- Ethnicity: 95% Non-Hispanic
- Gender: 70% Male, 30% Female

Key Initiatives to Improve SUD treatment :

- Updated Care Guidelines
- Enhanced Anti-Stigma Training
- Strengthen Referral Pathway

Social Determinants

Disability



5% reported a disability

Insurance



89% reported being on medicaid

Drug History



64% reported a history of multi-drug use

Mental Health



63% reported a history of behavioral health condition

Naloxone available at overdose prevention services and during outreaching activities

Overdose prevention & Community Events

75 distinct ZIP codes reached through overdose prevention community events

227 syringes delivered to CCMEO /CCSRFL

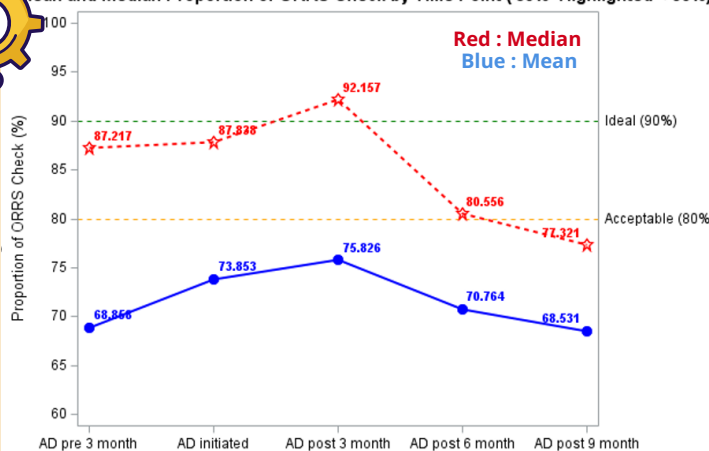
4,023 individuals encountered in community events

15,170 Naloxone doses distributed to individuals community events



Academic Detailing

Mean and Median Proportion of ORRS Check by Time Point (80% Highlighted < 90%)



Year 1: High Prescribing providers- Median ORRS check rates increased to a peak at AD post-3 months (92%), exceeding the 90% ideal threshold, but declined thereafter and fell below the 80% acceptable threshold by at 9 month post AD

Year 2: A total of 140 providers were trained, mostly from Primary Care and Emergency Medicine



CUYAHOGA COUNTY BOARD OF HEALTH



CASE WESTERN RESERVE UNIVERSITY
Jack, Joseph and Morton Mandel School of Applied Social Sciences

Begun Center for Violence Prevention Research and Education