

Weekly Influenza Surveillance Report April 21 - 27, 2024 (MMWR Week 17)

Highlights

Cuyahoga County

Flu activity level remained 'minimal' for the 4th consecutive week.

Flu activity rating explanation and weekly flu reports can be found here: <https://www.ccbh.net/weekly-flu-surveillance-reports/>

2.9% of deaths reported were due to pneumonia. This represents an approximate 31.0% decrease from the previous week. 55.6% of pneumonia related deaths this week occurred to adults 75 years old or older.

1 flu death was reported this week. There have been 13 flu deaths this season.

5 Influenza-associated hospitalizations (IAHs) were reported this week. IAHs continue to trend above the 5 year median. 1,419 hospitalizations have been reported for the flu season. Of these hospitalizations, 45.5% were among residents 65 years old or older.

Participating schools in Cuyahoga County reported the percentage (median = 2.3%) of absenteeism *due to any illness* on Tuesday. This is slightly above the 5 year median.

1.9% of emergency department visits were for flu like symptoms. This represents an approximate 20.9% increase from the previous week. ED visits for fever/ILI have remained below the 5 year median this season.

10 more OTC products were purchased from participating drugstores this week compared to the previous week. OTC products sold have remained below the 5 year median this season.

Ohio

Flu activity for the State of Ohio remained 'minimal' for the 3rd consecutive week.

126 Influenza-associated hospitalizations were reported this week.

1.1% of emergency department visits were for flu like symptoms.

For additional information on flu activity in Ohio, visit [Seasonal Influenza Activity Report | Ohio Department of Health](#)

United States

Seasonal influenza activity continues to decline in most areas of the country.

For additional information on flu activity in the United States, visit [Weekly U.S. Influenza Surveillance Report | CDC](#)

Data Note: All data reported to CCBH for this report are considered preliminary and are subject to change. There may be fluctuations in reporting which may affect the data.

Cuyahoga County Influenza Data Dashboard

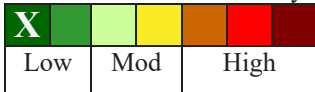
Influenza (Flu) Indicator	Current Week	Percent Change from last week	Trend Direction
Percent of pneumonia deaths & number of flu related deaths [Fig 1]	Pneumonia: 2.9%	Pneumonia: -31.0%	▼
	Flu: 1	Flu: 100.0%	▲
Flu associated hospitalizations [Fig 2]	5	-66.7%	▼
School absenteeism due to ILLNESS ONLY [Fig 3A]	2.3%	27.0%	▲
School absenteeism due to ALL CAUSES [Fig 3B]	N/A		
Emergency room visits due to ILI [Fig 4]	122	18.4%	▲
Sales of over-the-counter medications used to treat ILI [Fig 5]	193	5.5%	▲

¹Due to small percentages, caution should be used while interpreting the 'Percent Change from last week' box.

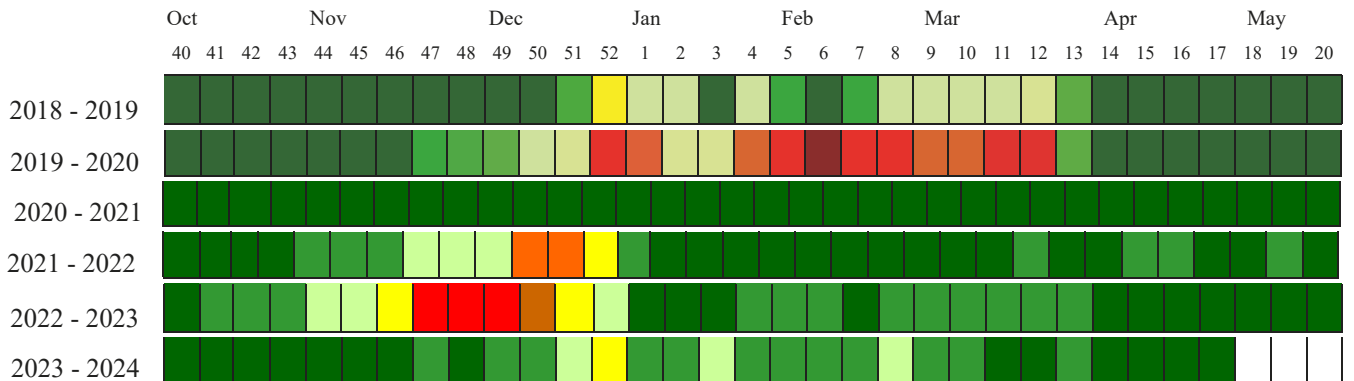
▲ = Increase, ▼ = Decrease, ● = Stable

Local Flu Activity Dashboard

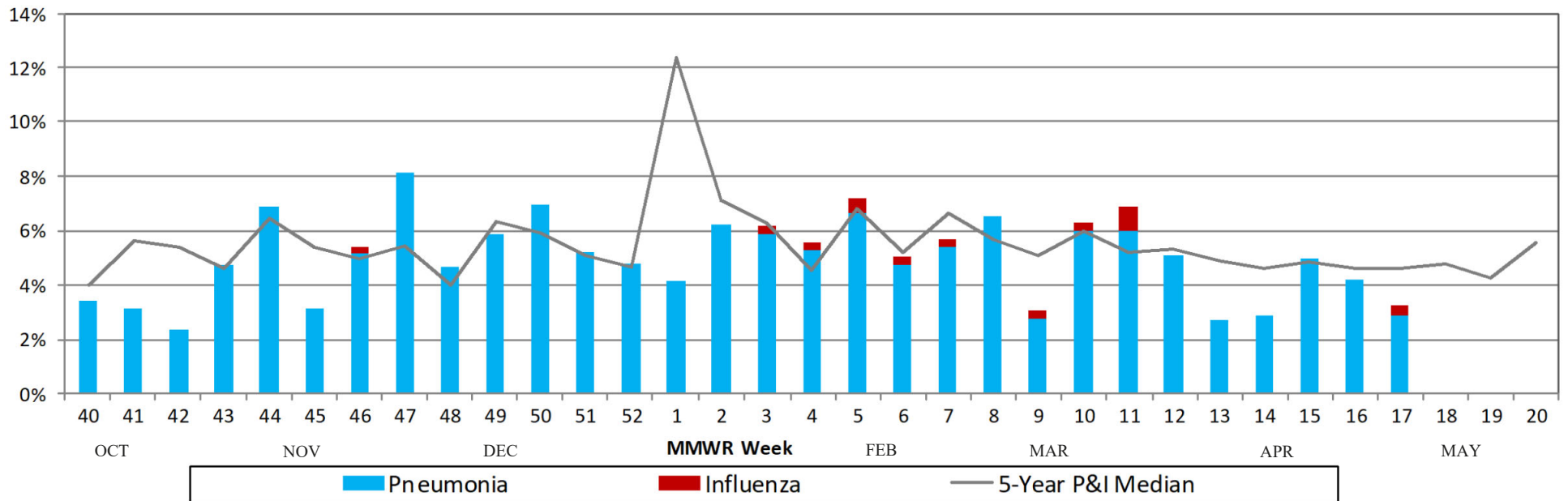
Current Week Flu Activity



Influenza Level Activity Comparison



**Figure 1: Percentage of Deaths Due to Pneumonia & Influenza (P&I)
Cleveland, Lakewood & Parma Vital Statistics Departments**



**Figure 2: Number of Influenza-Associated Hospitalizations
in Cuyahoga County (using event date)**

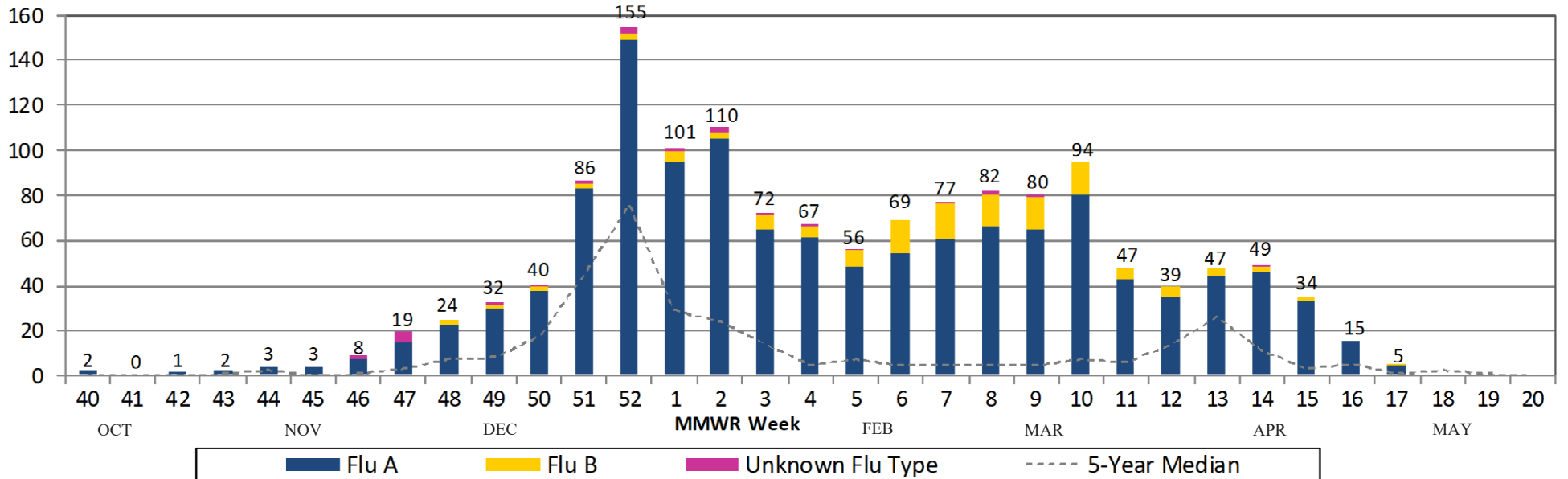


Figure 3A: School Absenteeism (due to any illness) in Cuyahoga County

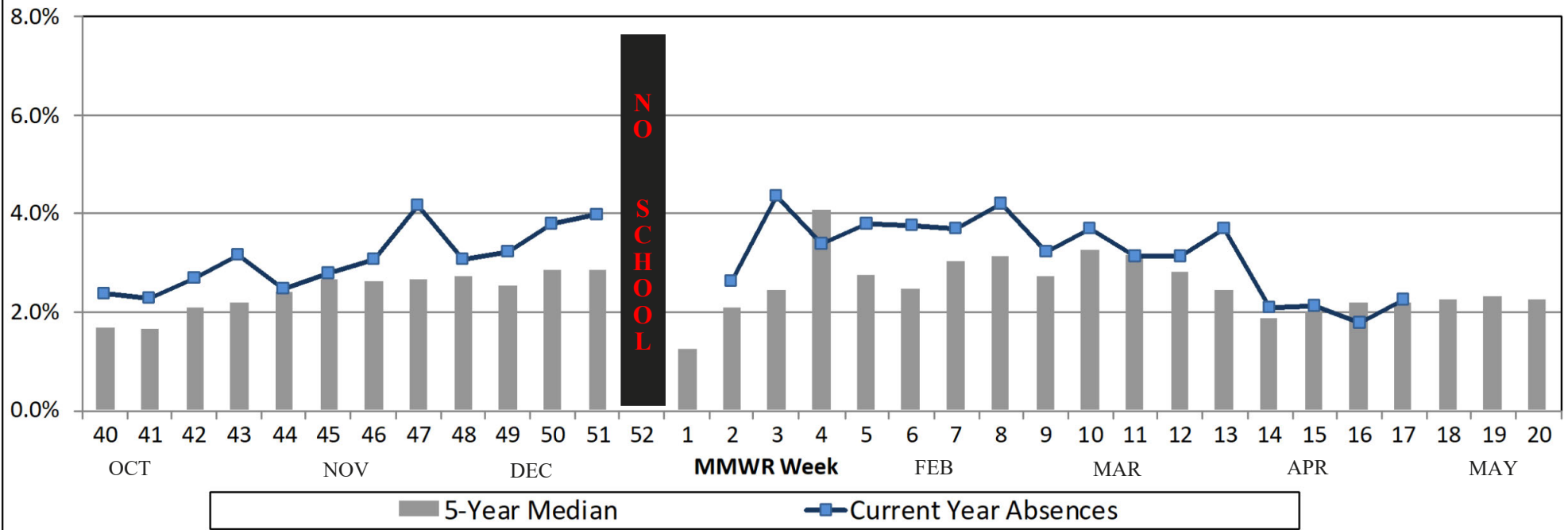


Figure 3B: School Absenteeism (due to any reason) in Cuyahoga County

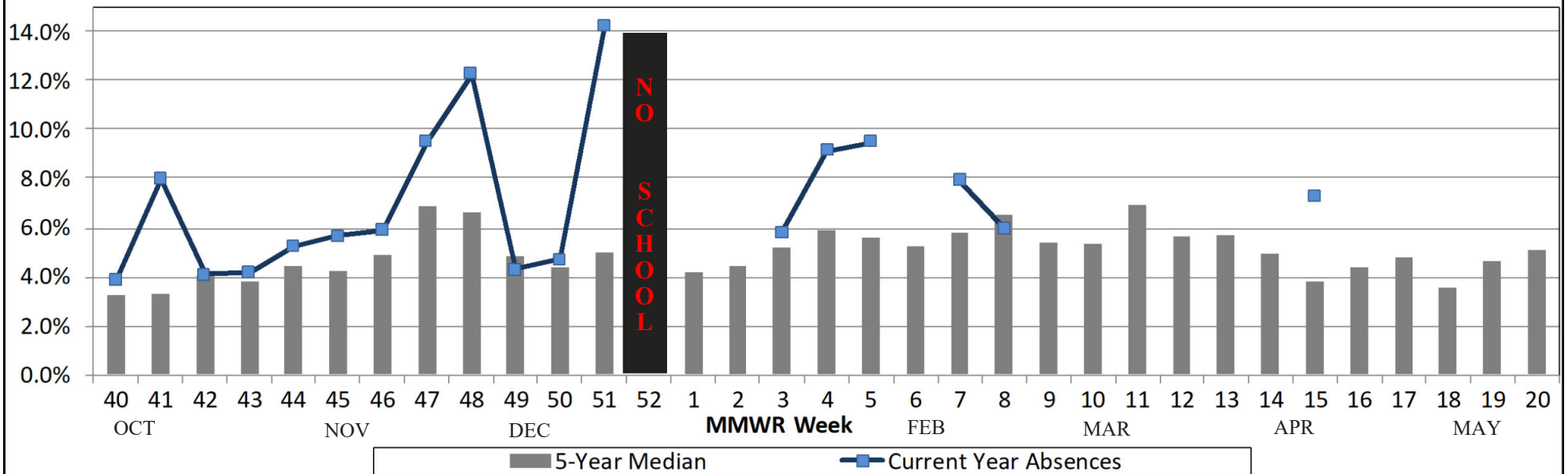


Figure 4: Cuyahoga County Hospital ED Visits for ILI & Fever Symptoms by Age Group

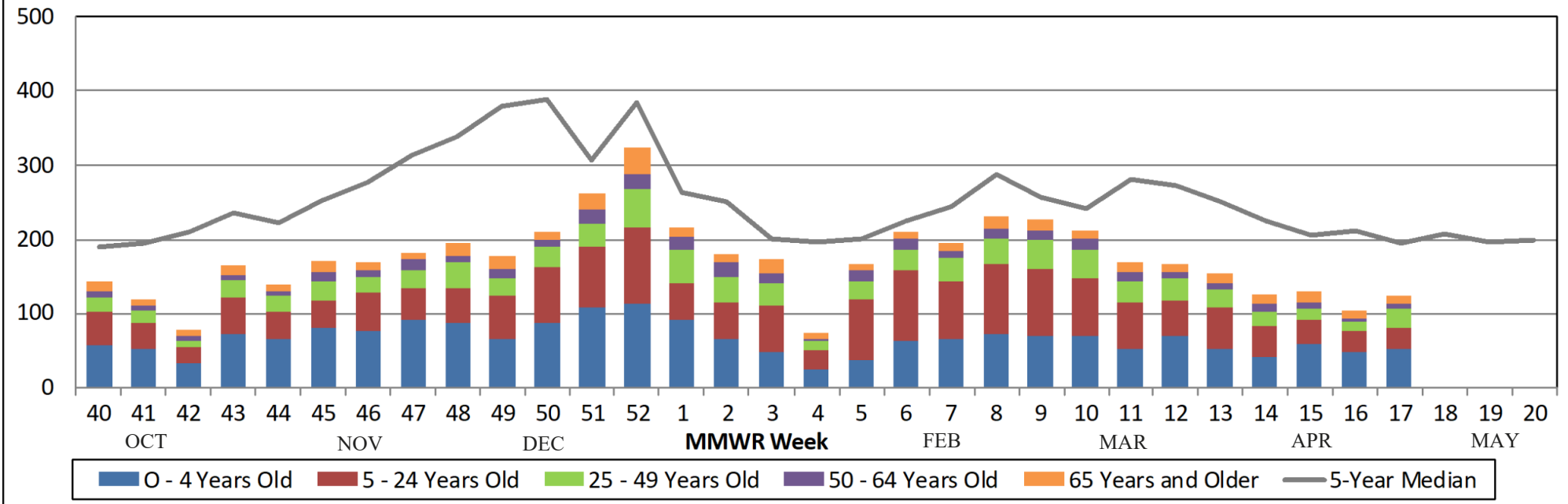
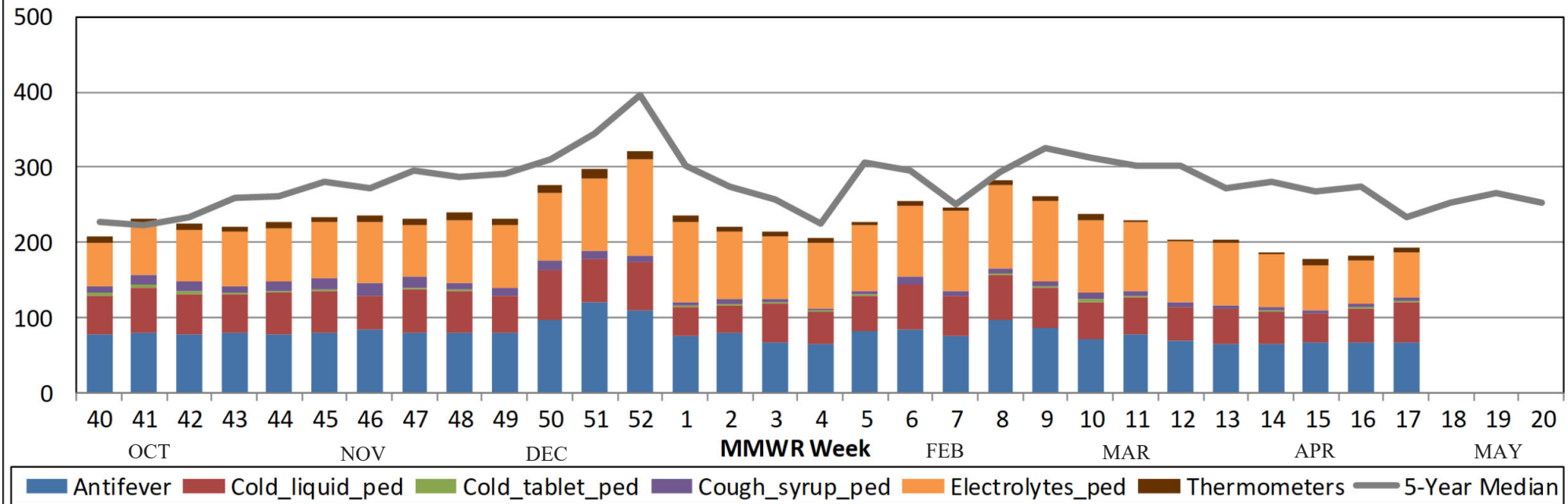


Figure 5: Comparison of Average Weekly OTC Products Sold in Cuyahoga County Drugstores



Sources of Influenza Surveillance Data

Five types of data sources are examined on a weekly basis to help determine the influenza activity level for Cuyahoga County:

- 1) **Ohio Department of Health (ODH) Seasonal Influenza Activity Summary:** The ODH influenza summary provides state-wide data . Data used from this report include: frequency of fever plus influenza-like illness (ILI) associated hospitalizations, number of influenza-associated pediatric mortalities, and number of lab-confirmed influenza cases.
 - A) **Influenza-associated Hospitalizations (ODRS):** Influenza-associated hospitalizations are reported by the Cuyahoga County Board of Health (CCBH) and hospitals using the Ohio Disease Reporting System (ODRS). Hospitalizations can be used as an indicator of the severity of illness during a particular influenza season. This condition became reportable in January 2009.
 - B) **Influenza-associated Pediatric Mortality (ODRS):** Influenza-associated pediatric mortalities are reported into ODRS by CCBH and hospital staff. Pediatric deaths can be an indicator of the severity of illness during the influenza season. This condition became reportable in 2005.
- 2) **Mortality Reporting System (Vital Statistics):** Vital Statistics offices in Cuyahoga County (Cleveland, Lakewood, & Parma) reports the percentage of deaths that are due to pneumonia or influenza that occur within their jurisdiction. Cleveland issues death certificates for 57 of the 59 cities in the county.
- 3) **School Absenteeism data (due to illness and due to any reason):** Cuyahoga County schools provide absenteeism data for each Tuesday on the number children absent due to any illness or due to any reason as well as sentinel schools that report week absenteeism data.
- 4) **Emergency Department Visits (EpiCenter):** EpiCenter collects emergency department chief complaint data from hospitals and urgent care facilities across Cuyahoga County and classifies them into symptom and syndrome categories. Rates for chief complaints regarding fever + ILI and other symptoms commonly detected during the winter are analyzed.
- 5) **National Retail Data Monitor (NRDM)-OTC Drug Purchases:** The NRDM collects over-the-counter (OTC) drug sales information from Cuyahoga County chain drug stores and grocery stores. Pediatric cold products, anti-fever products, and thermometer sales are monitored on a weekly basis.