

## Weekly Influenza Surveillance Report February 11 - 17, 2024 (MMWR Week 7)

### Highlights

#### Cuyahoga County

Flu activity level remained 'low' for the 6th consecutive week.

Flu activity rating explanation and weekly flu reports can be found here: <https://www.ccbh.net/weekly-flu-surveillance-reports/>

5.4% of deaths reported were due to pneumonia. This represents an approximate 14.0% increase from the previous week.

1 flu death was reported this week. There have been 7 flu deaths this season.

37 flu associated hospitalizations were reported this week. 723 hospitalizations for the flu season.

2.9% of emergency department visits were for flu like symptoms. This represents an approximate 6.8% decrease from the previous week.

Wastewater monitoring data suggest an increase in viral gene copies of Influenza B at NEORS Southernly WWTC.

#### Ohio

Flu activity for the State of Ohio remained 'very high' for the 2nd consecutive week.

631 Influenza-associated hospitalizations were reported this week.

2.6% of emergency department visits were for flu like symptoms.

For additional information on flu activity in Ohio, visit [Seasonal Influenza Activity Report | Ohio Department of Health](#)

#### United States

Seasonal influenza activity remains elevated nationally with increases in some parts of the country.

For additional information on flu activity in the United States, visit [Weekly U.S. Influenza Surveillance Report | CDC](#)

# Cuyahoga County Influenza Data Dashboard

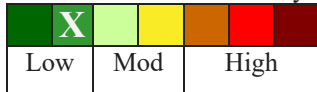
Influenza (Flu) Indicator	Current Week	Percent Change from last week	Trend Direction
Percent of pneumonia deaths & number of flu related deaths [Fig 1]	Pneumonia: 5.4%	Pneumonia: 14.0%	▲
	Flu: 1	Flu: 0.0%	●
Flu associated hospitalizations [Fig 2]	37	-27.5%	▼
School absenteeism due to <b>ILLNESS ONLY</b> [Fig 3A]	3.7%	-2.3%	▼
School absenteeism due to <b>ALL CAUSES</b> [Fig 3B]	7.9%	N/A	
Emergency room visits due to ILI [Fig 4]	193	-8.1%	▼
Sales of over-the-counter medications used to treat ILI [Fig 5]	246	-3.1%	▼

<sup>1</sup>Due to small percentages, caution should be used while interpreting the 'Percent Change from last week' box.

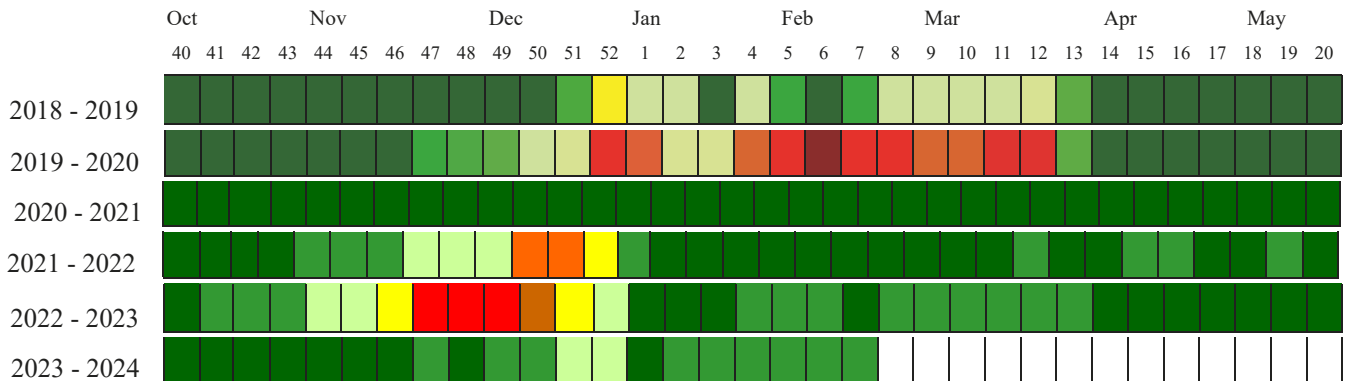
▲ = Increase, ▼ = Decrease, ● = Stable

## Local Flu Activity Dashboard

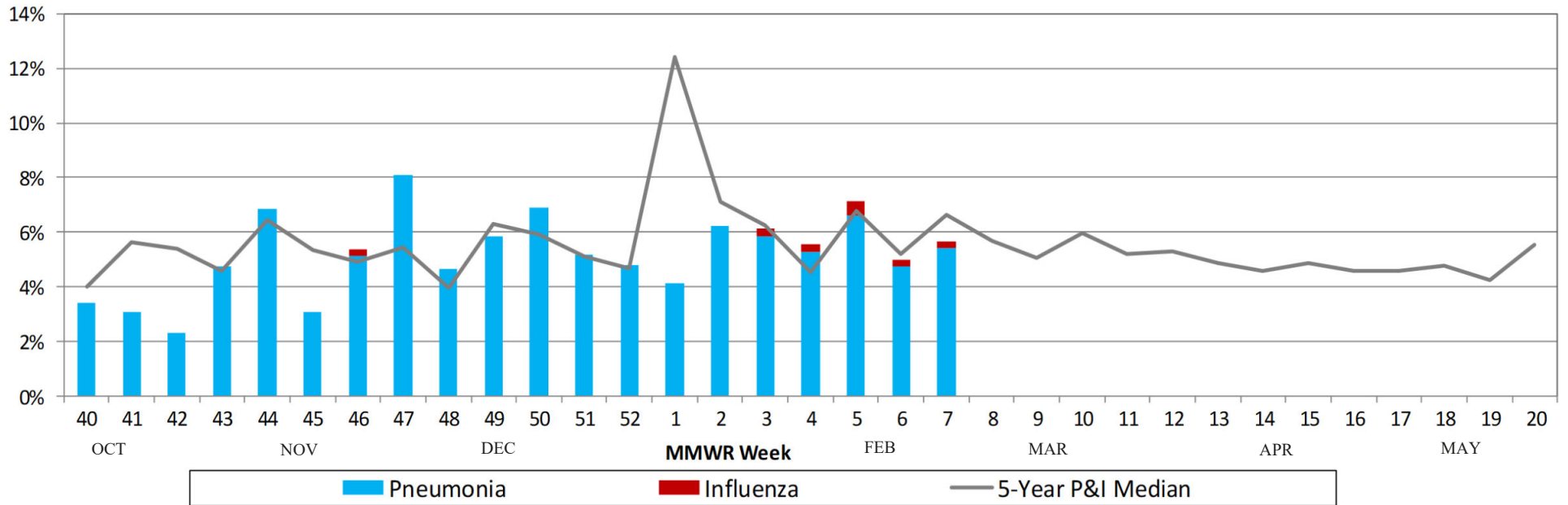
Current Week Flu Activity



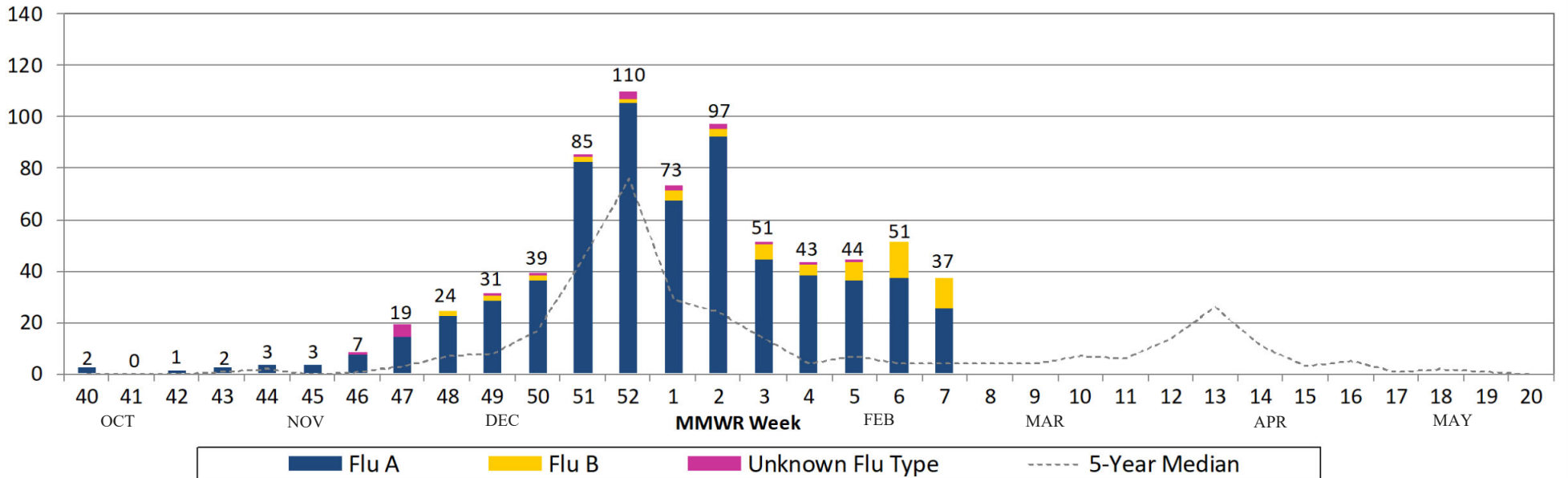
## Influenza Level Activity Comparison



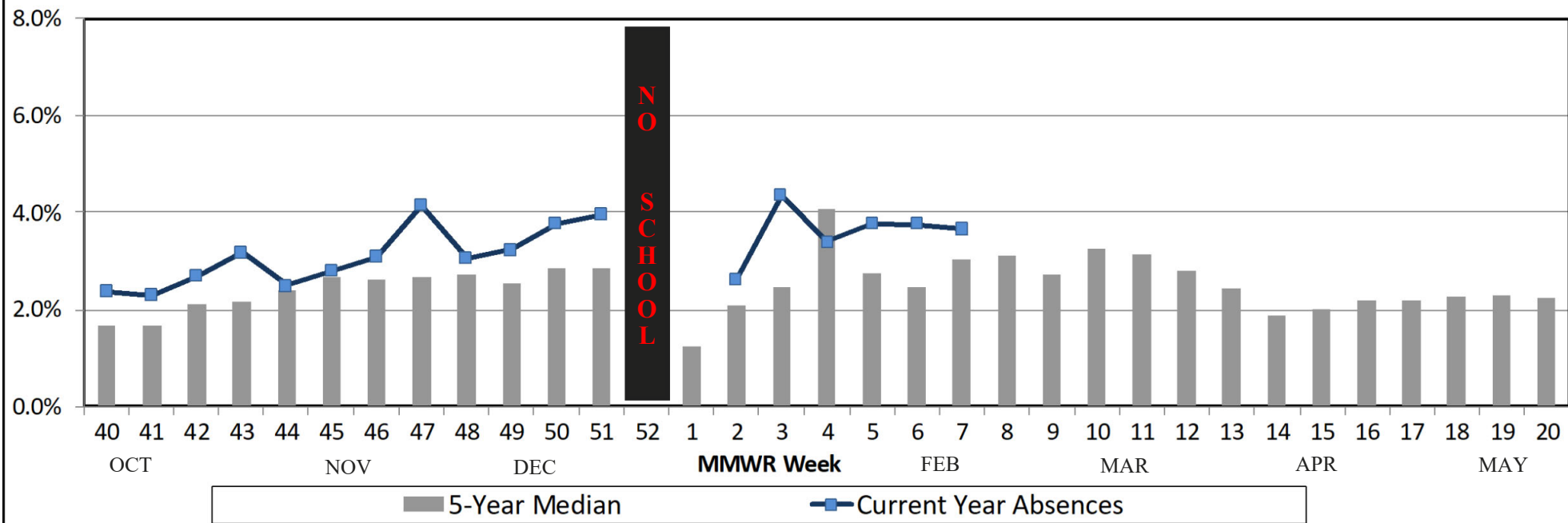
**Figure 1: Percentage of Deaths Due to Pneumonia & Influenza (P&I)  
Cleveland, Lakewood & Parma Vital Statistics Departments**



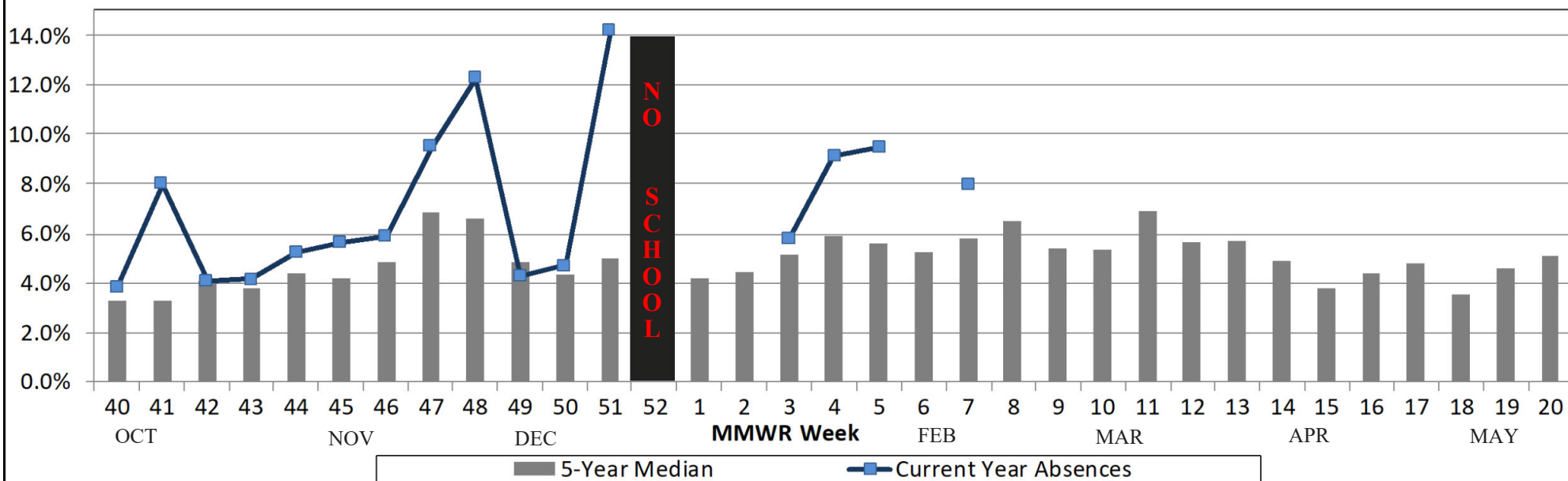
**Figure 2: Number of Influenza-Associated Hospitalizations  
in Cuyahoga County (using event date)**



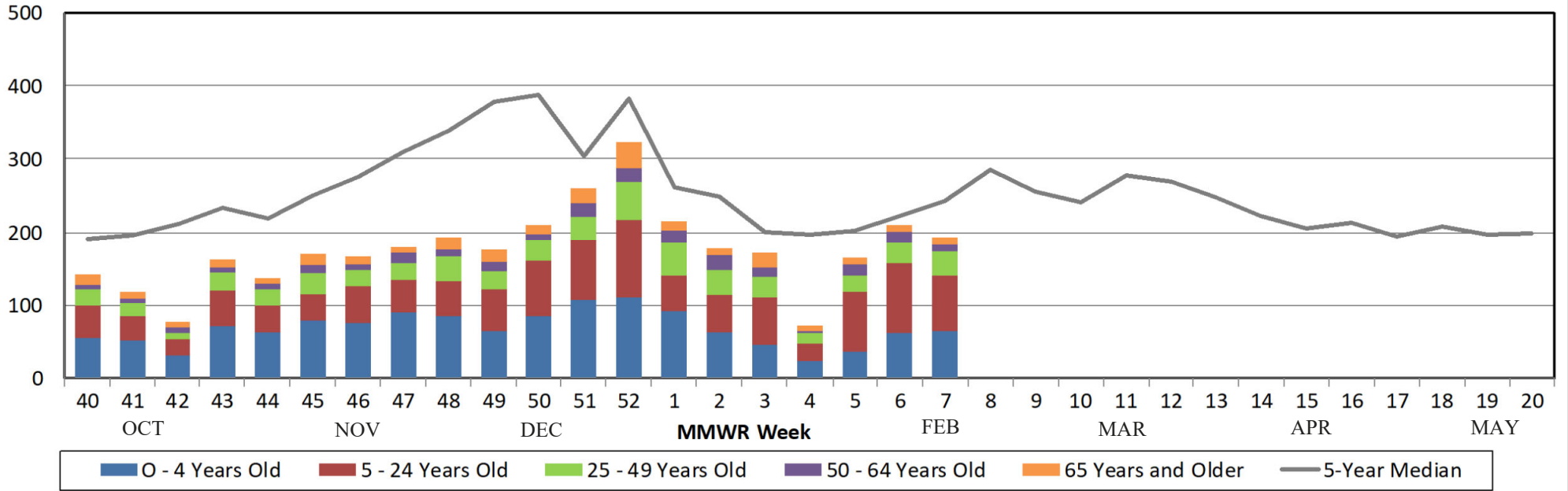
**Figure 3A: School Absenteeism (due to any illness) in Cuyahoga County**



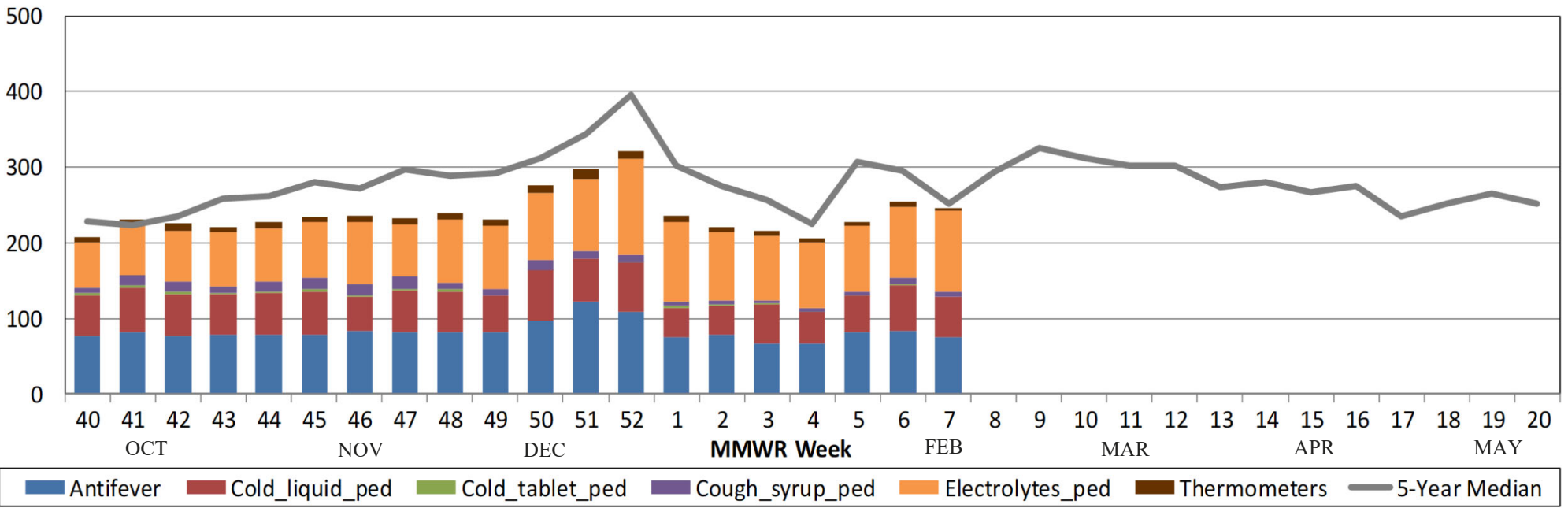
**Figure 3B: School Absenteeism (due to any reason) in Cuyahoga County**



**Figure 4: Cuyahoga County Hospital ED Visits for ILI & Fever Symptoms by Age Group**



**Figure 5: Comparison of Average Weekly OTC Products Sold in Cuyahoga County Drugstores**



## Sources of Influenza Surveillance Data

Five types of data sources are examined on a weekly basis to help determine the influenza activity level for Cuyahoga County:

- 1) **Ohio Department of Health (ODH) Seasonal Influenza Activity Summary:** The ODH influenza summary provides state-wide data . Data used from this report include: frequency of fever plus influenza-like illness (ILI) associated hospitalizations, number of influenza-associated pediatric mortalities, and number of lab-confirmed influenza cases.
  - A) **Influenza-associated Hospitalizations (ODRS):** Influenza-associated hospitalizations are reported by the Cuyahoga County Board of Health (CCBH) and hospitals using the Ohio Disease Reporting System (ODRS). Hospitalizations can be used as an indicator of the severity of illness during a particular influenza season. This condition became reportable in January 2009.
  - B) **Influenza-associated Pediatric Mortality (ODRS):** Influenza-associated pediatric mortalities are reported into ODRS by CCBH and hospital staff. Pediatric deaths can be an indicator of the severity of illness during the influenza season. This condition became reportable in 2005.
- 2) **Mortality Reporting System (Vital Statistics):** Vital Statistics offices in Cuyahoga County (Cleveland, Lakewood, & Parma) reports the percentage of deaths that are due to pneumonia or influenza that occur within their jurisdiction. Cleveland issues death certificates for 57 of the 59 cities in the county.
- 3) **School Absenteeism data (due to illness and due to any reason):** Cuyahoga County schools provide absenteeism data for each Tuesday on the number children absent due to any illness or due to any reason as well as sentinel schools that report week absenteeism data.
- 4) **Emergency Department Visits (EpiCenter):** EpiCenter collects emergency department chief complaint data from hospitals and urgent care facilities across Cuyahoga County and classifies them into symptom and syndrome categories. Rates for chief complaints regarding fever + ILI and other symptoms commonly detected during the winter are analyzed.
- 5) **National Retail Data Monitor (NRDM)-OTC Drug Purchases:** The NRDM collects over-the-counter (OTC) drug sales information from Cuyahoga County chain drug stores and grocery stores. Pediatric cold products, anti-fever products, and thermometer sales are monitored on a weekly basis.