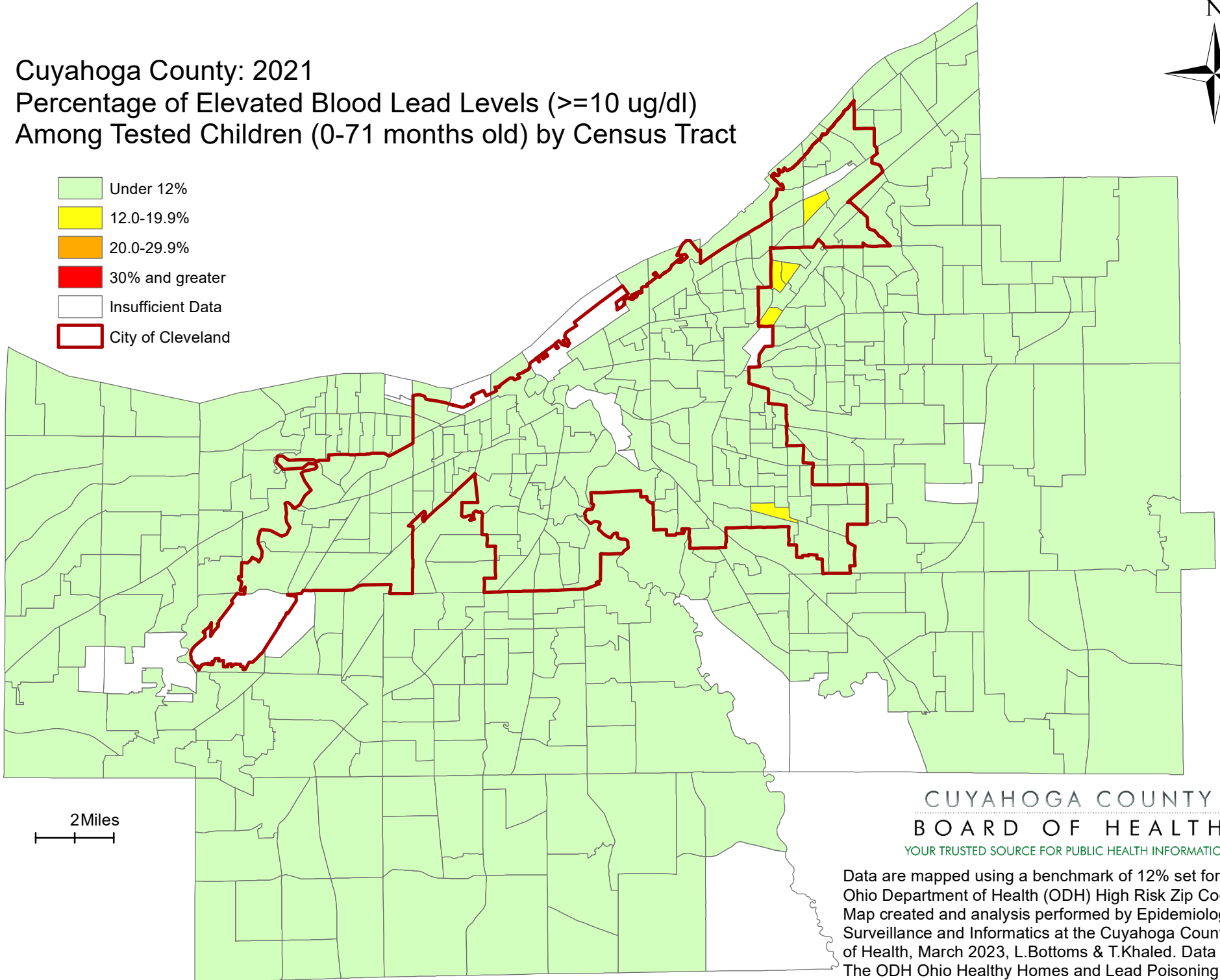


# Cuyahoga County: 2021 Percentage of Elevated Blood Lead Levels ( $\geq 10$ ug/dl) Among Tested Children (0-71 months old) by Census Tract



- Under 12%
- 12.0-19.9%
- 20.0-29.9%
- 30% and greater
- Insufficient Data
- City of Cleveland



2 Miles

CUYAHOGA COUNTY  
BOARD OF HEALTH  
YOUR TRUSTED SOURCE FOR PUBLIC HEALTH INFORMATION

Data are mapped using a benchmark of 12% set forth by the Ohio Department of Health (ODH) High Risk Zip Code analysis. Map created and analysis performed by Epidemiology, Surveillance and Informatics at the Cuyahoga County Board of Health, March 2023, L.Bottoms & T.Khaled. Data Source: The ODH Ohio Healthy Homes and Lead Poisoning Prevention Program (OHLPPP). The Department specifically disclaims responsibility for any analyses, interpretations or conclusions.