

CUYAHOGA COUNTY PUBLIC HEALTH COLLABORATIVE

CUYAHOGA COUNTY
BOARD OF HEALTH
YOUR TRUSTED SOURCE FOR PUBLIC HEALTH INFORMATION



December 18 - 24, 2022 (MMWR Week 51)

Highlights

Flu activity level was 'high' for the 2nd consecutive week.

Flu activity rating explanation and weekly flu reports can be found here: <https://www.ccbh.net/weekly-flu-surveillance-reports/>

3.9% of deaths reported were due to pneumonia.

4 flu deaths were reported this week. 6 flu deaths so far this season.

68 flu associated hospitalizations were reported this week. 837 hospitalizations for the flu season.

3.6% of emergency department visits were for flu like symptoms.

Local Flu Activity Dashboard (All data are preliminary and may change as updated data are received.)

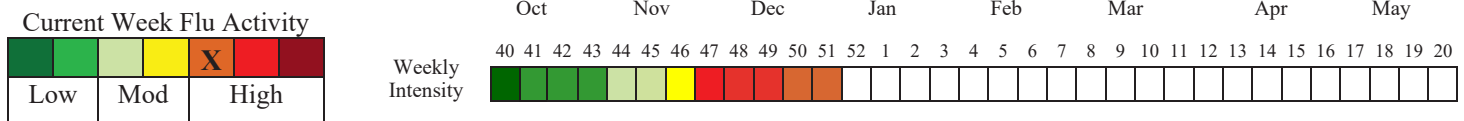


Table 1. Cuyahoga County Influenza Data Dashboard

Influenza (Flu) Indicator	Current Activity Level	Activity Compared to Last Week	#Weeks ¹²³⁴	2022-2023 Season Total/Trend
Percent of pneumonia deaths & number of flu related deaths - [Fig 1]	Pneumonia: 3.89% Flu: 4 Deaths	(30.6%) +4	2 ▼ 1 ▲	P&I death slightly below 5-year median. Flu deaths = 6.
Flu associated hospitalizations [Fig 2]	68	(70)	2 ▼	Highest in past 10 yrs. n = 837.
School absenteeism due to ILLNESS ONLY – [Fig 3A]	5.55%	41.3%	1 ▲	Significantly (Sig.) higher than 5-year median
School absenteeism due to ALL CAUSES – [Fig 3B]	9.05%	12.3%	1 ▲	Sig. higher than 5-year median
Emergency room visits due to ILI [Fig 4]	267	(39.0%)	4 ▼	Sig. higher than 5-year median
Sales of over-the-counter medications used to treat ILI. [Fig 5]	391	(3.9%)	3 ●	Sig. higher than 5-year median
Congestion & cough complaints	22.09%	(7.1%)	2 ▼	Higher than 5-year median.

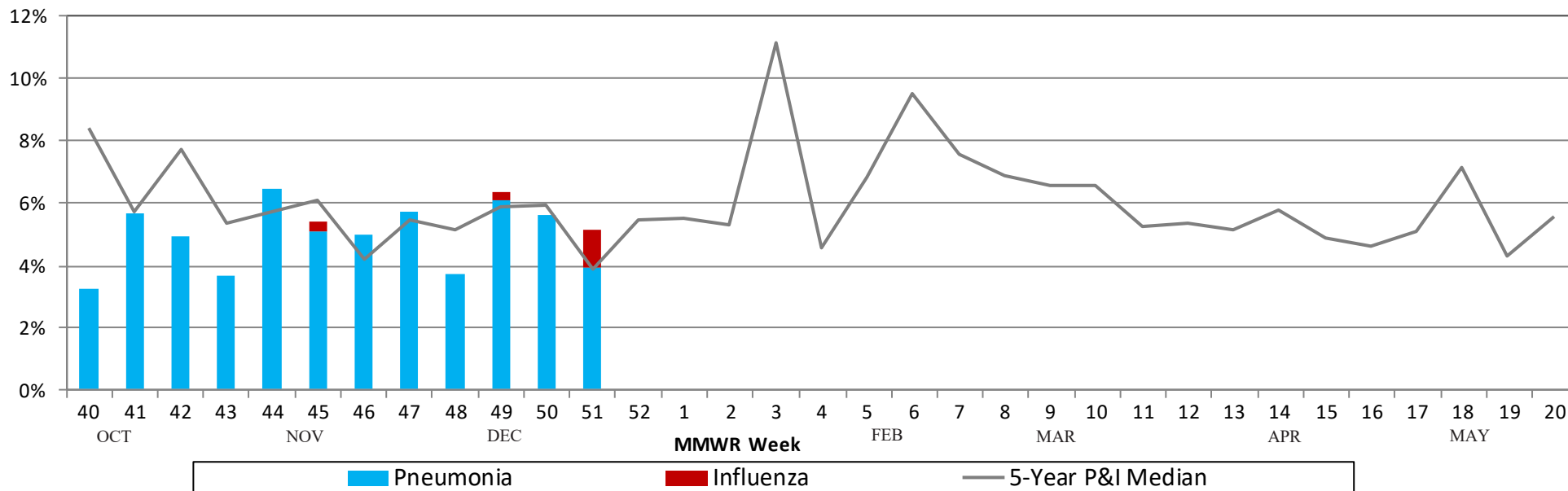
¹Due to small percentages, caution should be used while interpreting the 'Activity Compared to Last Week' box.

²For figures 3a-3b, ▲ = (Increase ≥ 10%), ▼ = (Decrease ≥ -10%), ● = Stable (-9.9% to +9.9%)

³For figures 1, 4-5, and congestion & cold complaints ▲ = (Increase ≥ 5%), ▼ = (Decrease ≥ -5%), ● = Stable (-4.9% to +4.9%)

⁴For flu related deaths and hospitalizations (Fig 1 & 2) ▲ = (Increase # of deaths/cases), ▼ = (Decrease # of deaths/cases), ● = Stable (Same # of deaths/cases)

**Figure 1: Percentage of Deaths Due to Pneumonia & Influenza (P&I)
Cleveland, Lakewood & Parma Vital Statistics Departments**



**Figure 2: Number of Influenza-Associated Hospitalizations
in Cuyahoga County (using event date)**

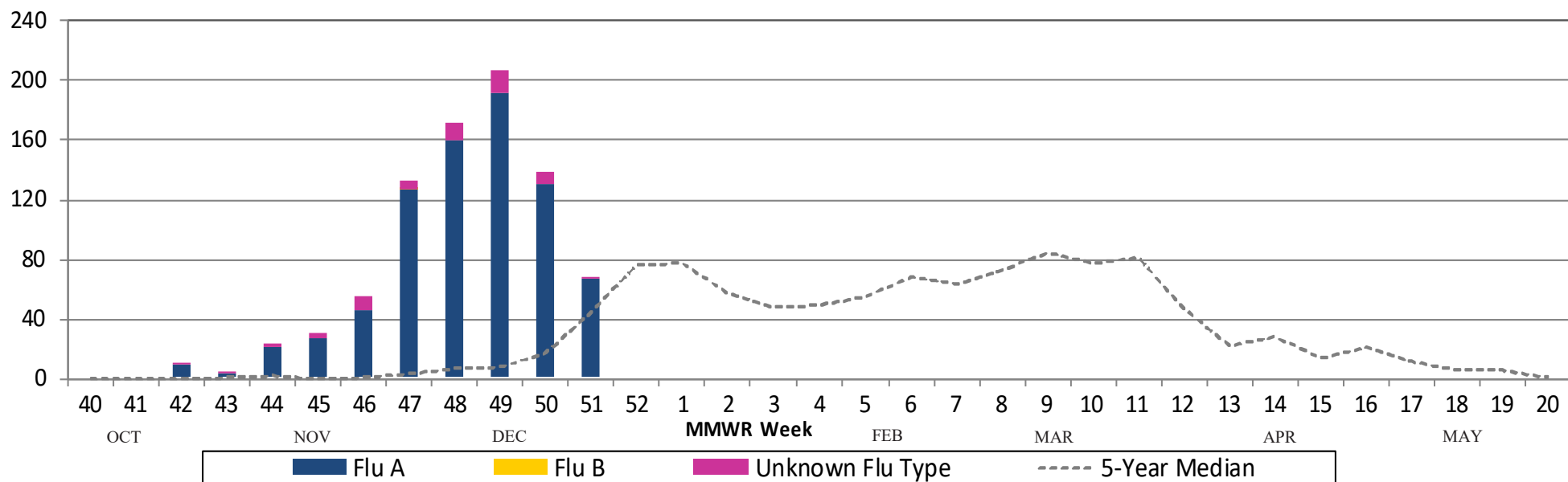


Figure 3A: School Absenteeism (*due to any illness*) in Cuyahoga County

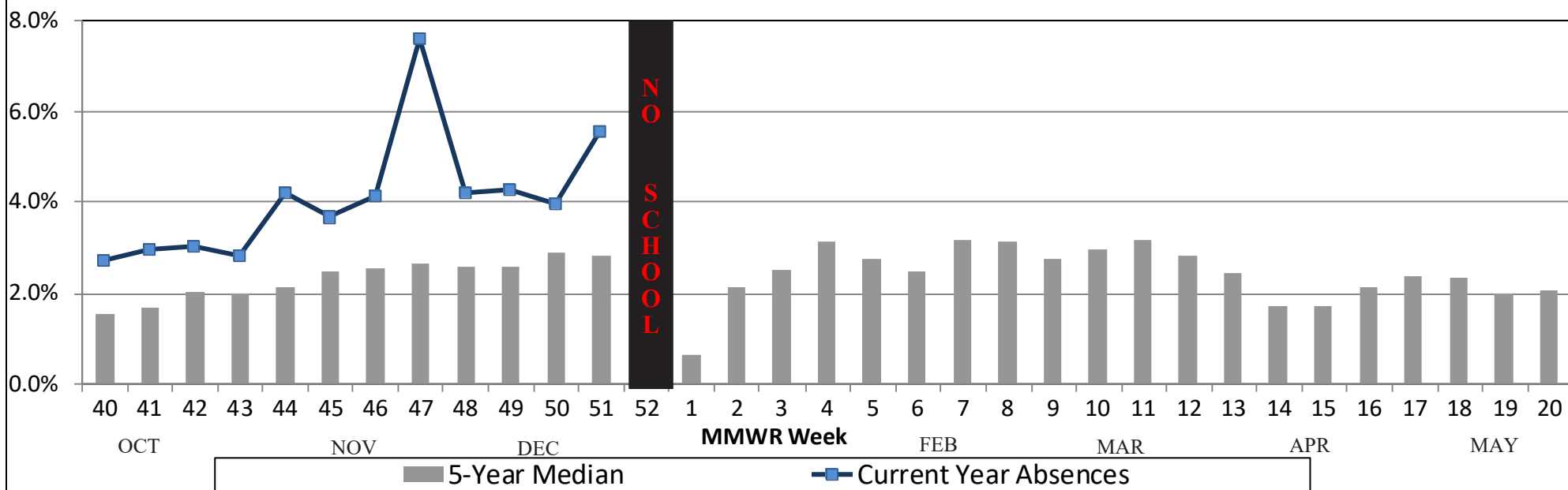


Figure 3B: School Absenteeism (*due to any reason*) in Cuyahoga County

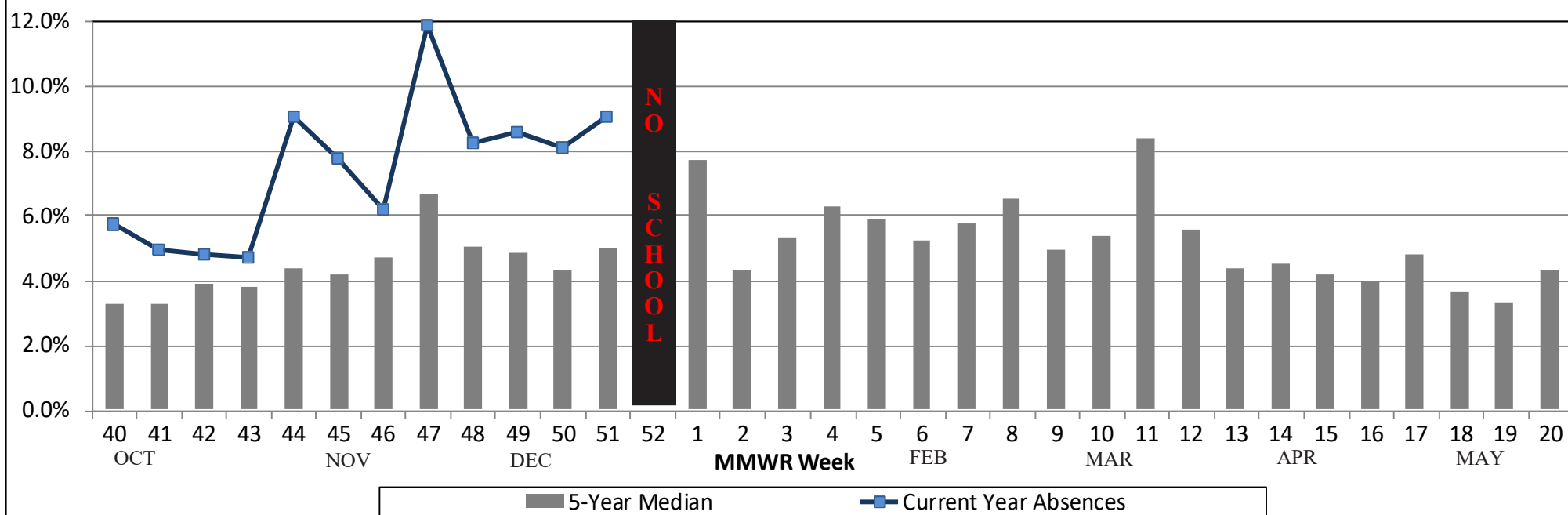


Figure 4: Cuyahoga County Hospital ED Visits for ILI & Fever Symptoms by Age Group

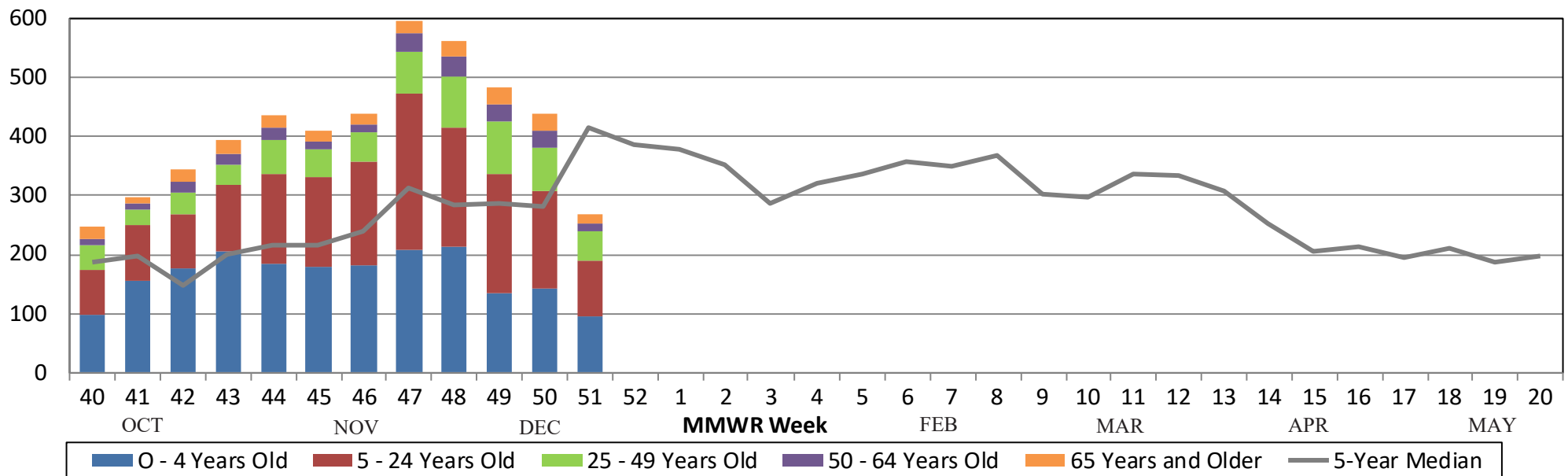


Figure 5: Comparison of Average Weekly OTC Products Sold in Cuyahoga County Drugstores

