

CUYAHOGA COUNTY

BOARD OF HEALTH

YOUR TRUSTED SOURCE FOR PUBLIC HEALTH INFORMATION

5550 Venture Drive Parma, Ohio 44130
216-201-2000 www.ccbh.net

COVID-19 Press Briefing
April 10, 2020

CCBH Jurisdiction

- Total lab-confirmed cases = 746
- Age range = 1 week - 101
- Date of illness onset = 2/29 – 4/6
- Deaths = 20
 - Age range = 55 - 93
 - Dates = 3/20 - 4/7
 - 8 females, 12 males

CCBH Jurisdiction

- # isolation orders = 737
- # quarantine orders = 1427
- # cleared cases = 143



HISTORY MATTERS:

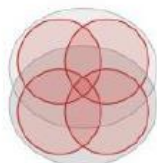
UNDERSTANDING THE ROLE OF POLICY, RACE AND REAL ESTATE IN TODAY'S
GEOGRAPHY OF HEALTH EQUITY AND OPPORTUNITY IN CUYAHOGA COUNTY

A Policy Brief Prepared on behalf of the Cuyahoga County PlaceMatters Team

Prepared by the Kirwan Institute for the Study of Race & Ethnicity &

The City & Regional Planning Program at the Knowlton School of Architecture

The Ohio State University



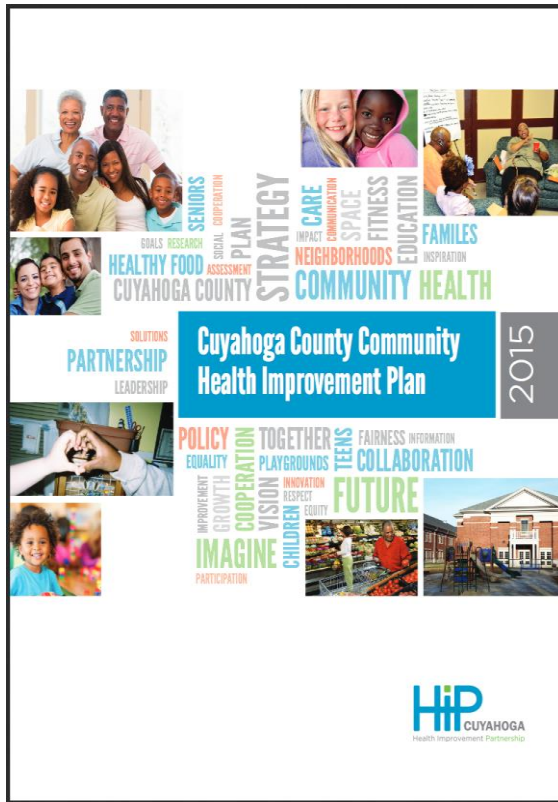
KIRWAN INSTITUTE
for the Study of Race and Ethnicity



CUYAHOGA COUNTY

PLACEMATTERS

CCBH



LIMITED OPPORTUNITIES

Social Factors and Conditions That Shape Health

- Structural racism
- Trust
- Poverty
- Food Insecurity
- Transportation

POOR HEALTH

Health Behaviors, Mental Health and Health Outcomes

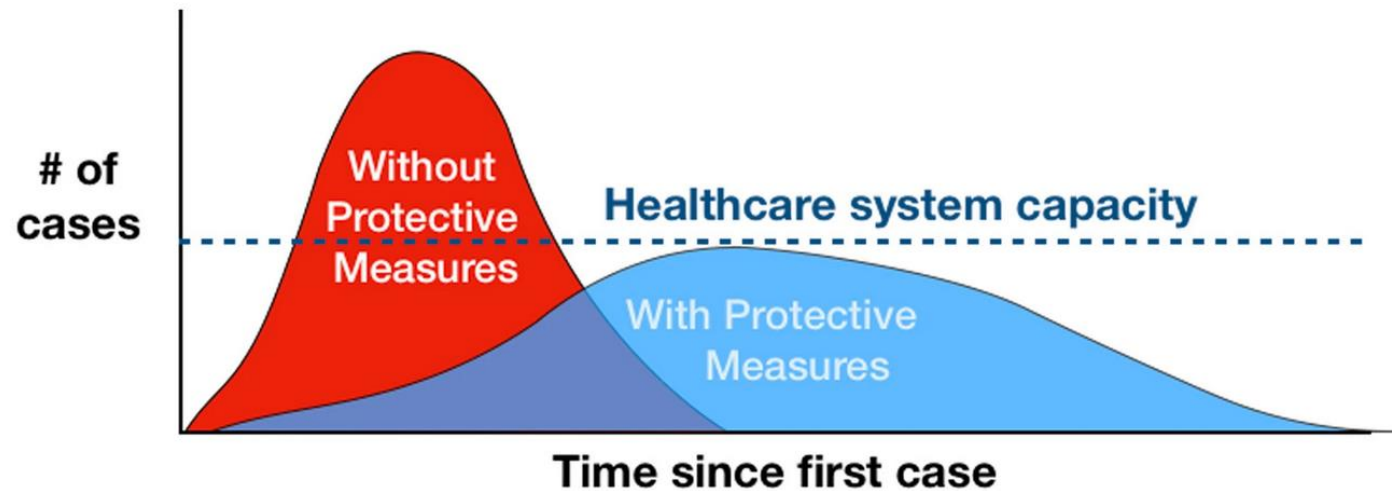
- Tobacco use
- Lack of physical activity
- Flu vaccination rates
- Cardiovascular disease
- Diabetes
- Childhood asthma
- Opioids
- Homicide/violence
- Lead poisoning

SHORTER LIVES

Mortality

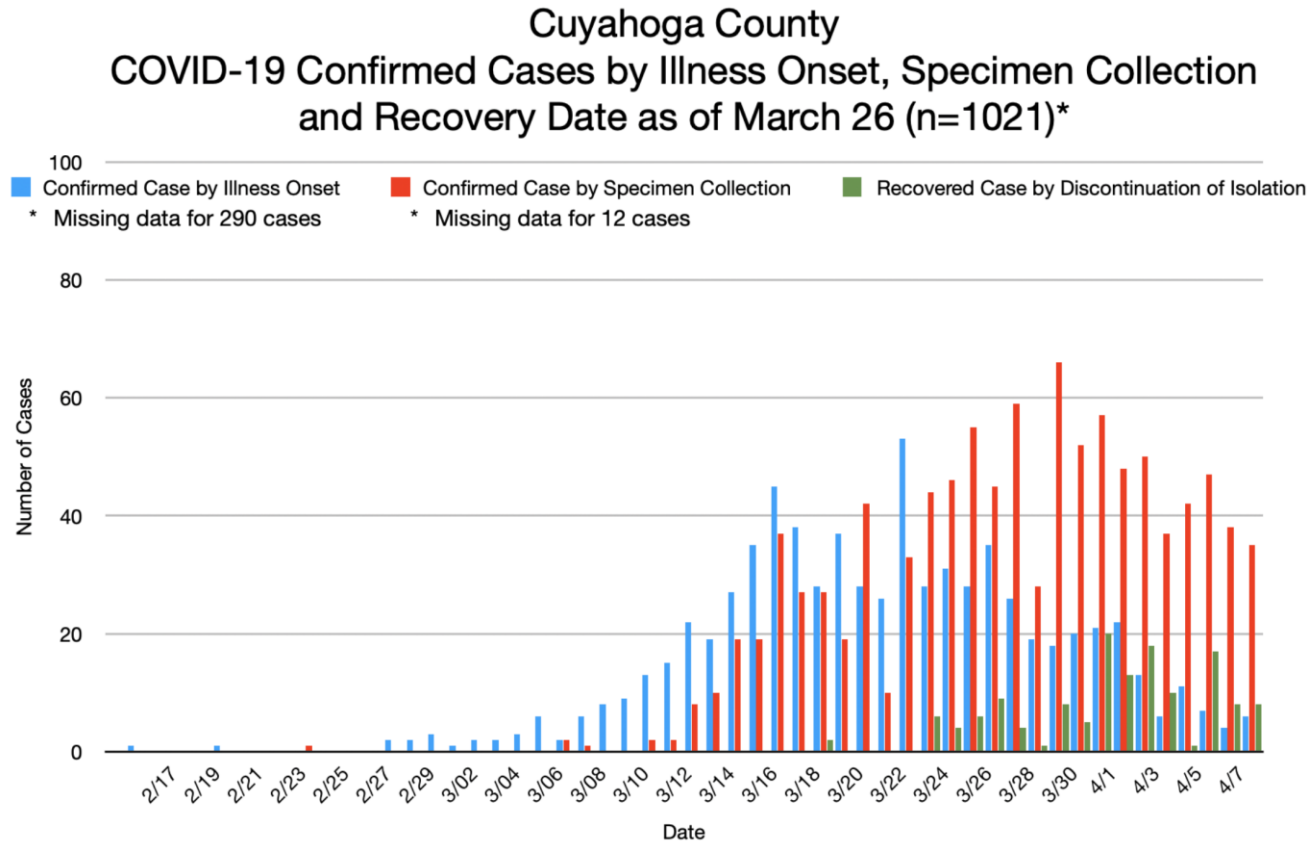
- Infant mortality
- Life Expectancy
- Mortality rates from disease

Flatten the Curve



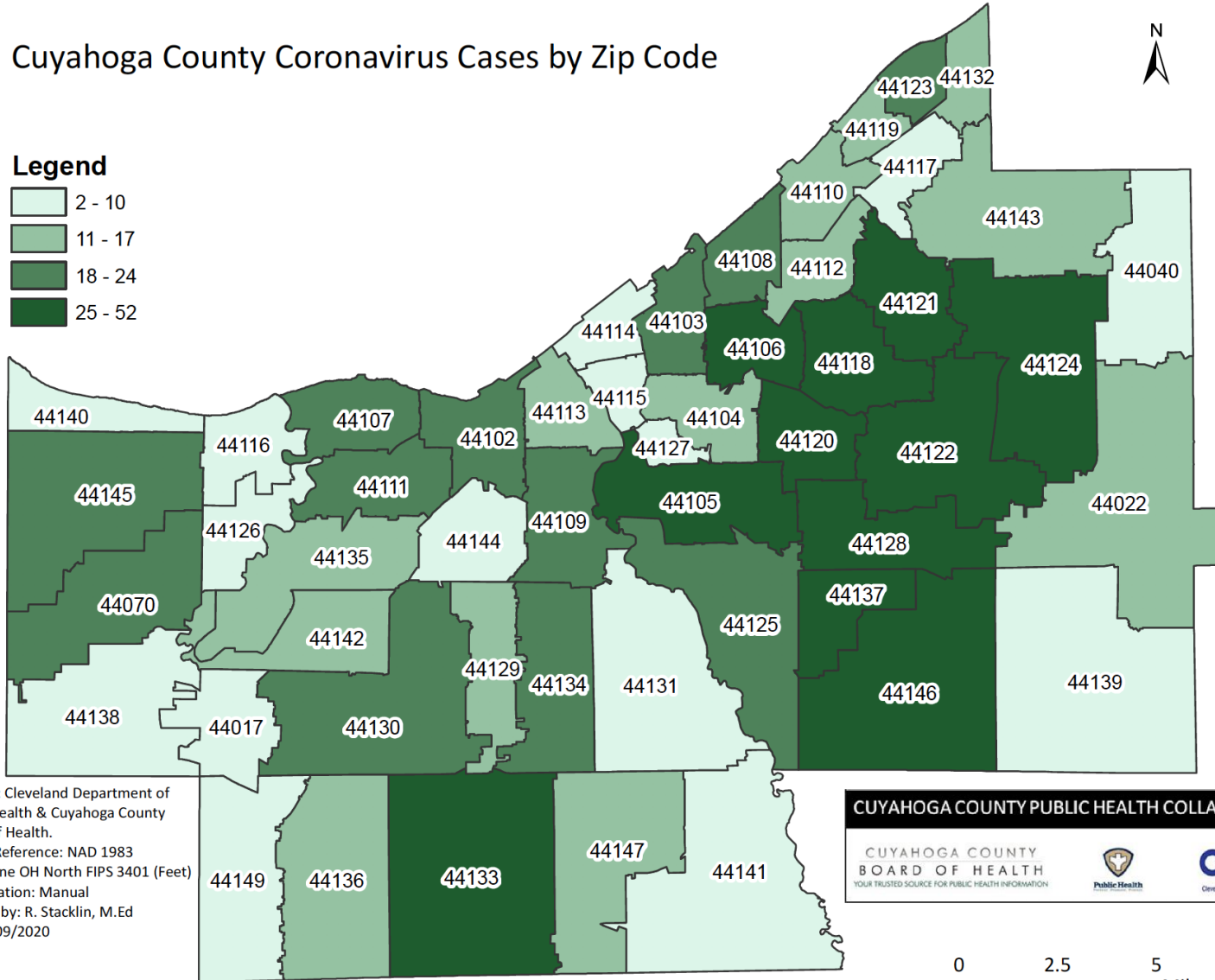
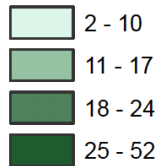
Adapted from CDC / The Economist

Cuyahoga County Epi Curve



Cuyahoga County Coronavirus Cases by Zip Code

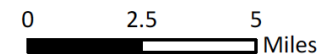
Legend



Sources: Cleveland Department of Public Health & Cuyahoga County Board of Health.
 Spatial Reference: NAD 1983 StatePlane OH North FIPS 3401 (Feet)
 Classification: Manual
 Created by: R. Stacklin, M.Ed
 Date 4/09/2020
 v1

CUYAHOGA COUNTY PUBLIC HEALTH COLLABORATIVE

CUYAHOGA COUNTY
 BOARD OF HEALTH
 YOUR TRUSTED SOURCE FOR PUBLIC HEALTH INFORMATION

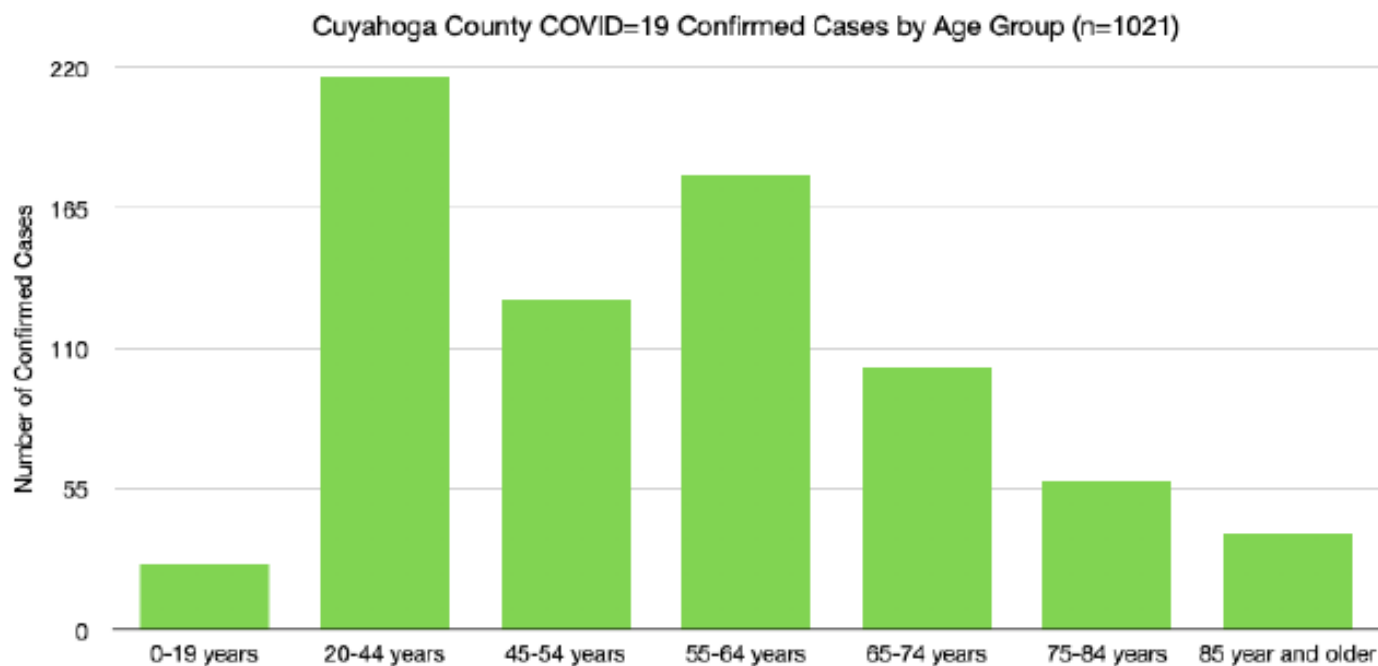


CCBH

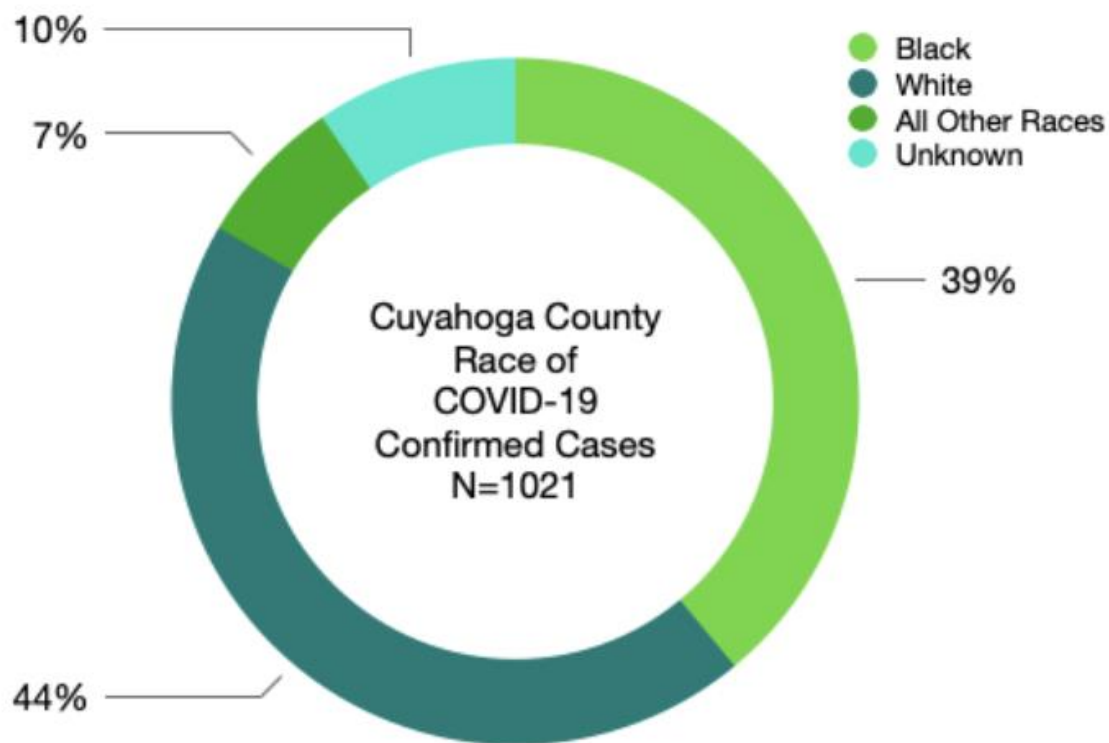
Additional Cuyahoga County Level Surveillance Data

- % positive aggregate estimate = 11-13%
- % hospitalizations = 33%
- % ICU admissions = 13%
- % health care workers = 33%

Additional Cuyahoga County Level Surveillance Data



Additional Cuyahoga County Level Surveillance Data



Additional Cuyahoga County Level Hospital Utilization Data

- % utilization
 - Med/Surg Adult = 62% (*no change*)
 - Med/Surg Pediatric = 37% (*increase 6%*)
 - Critical Care Adult = 68% (*decrease 1%*)
 - Ventilators = 35% (*decrease 20%*)

CUYAHOGA COUNTY BOARD OF HEALTH

YOUR TRUSTED SOURCE FOR PUBLIC HEALTH INFORMATION

5550 Venture Drive Parma, Ohio 44130
216-201-2000 www.ccbh.net

